

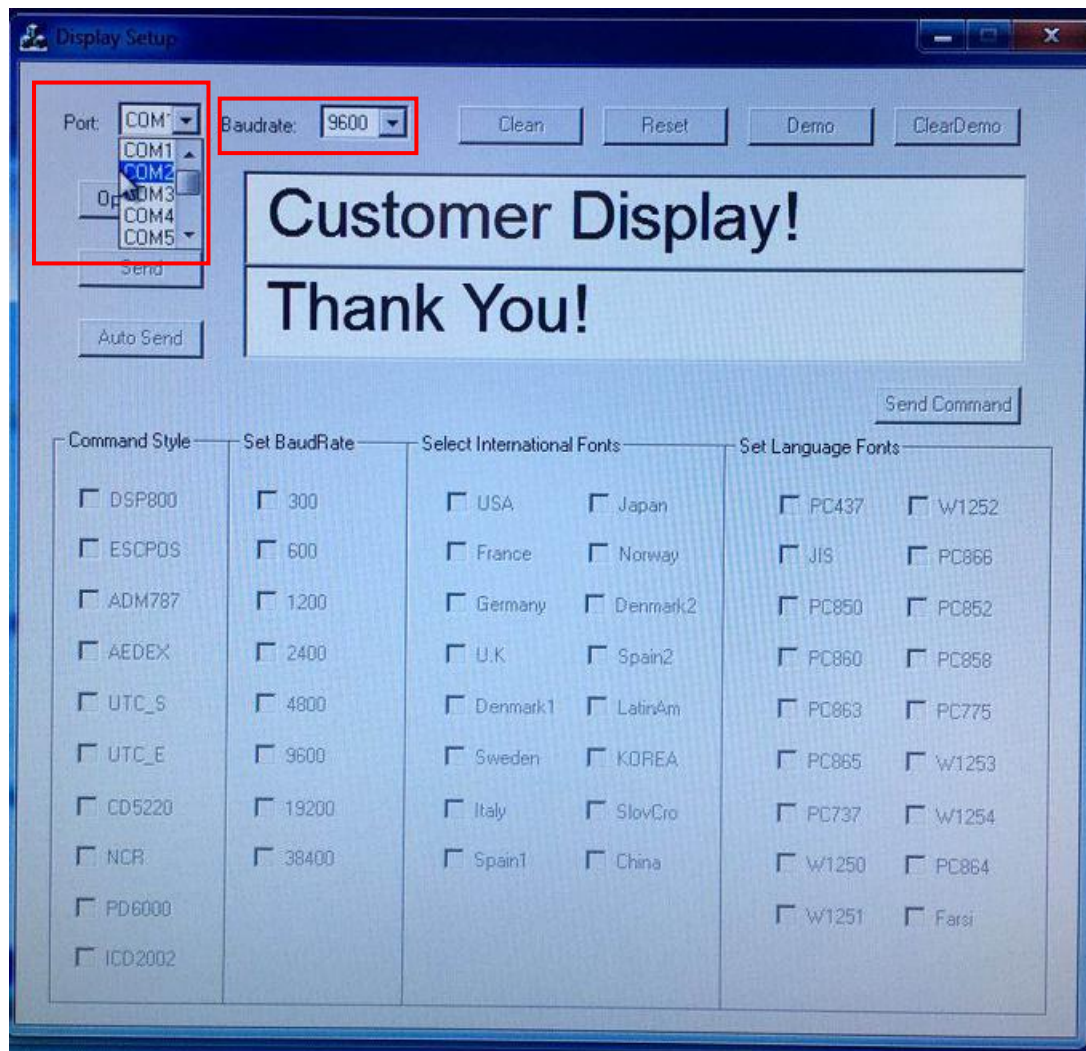


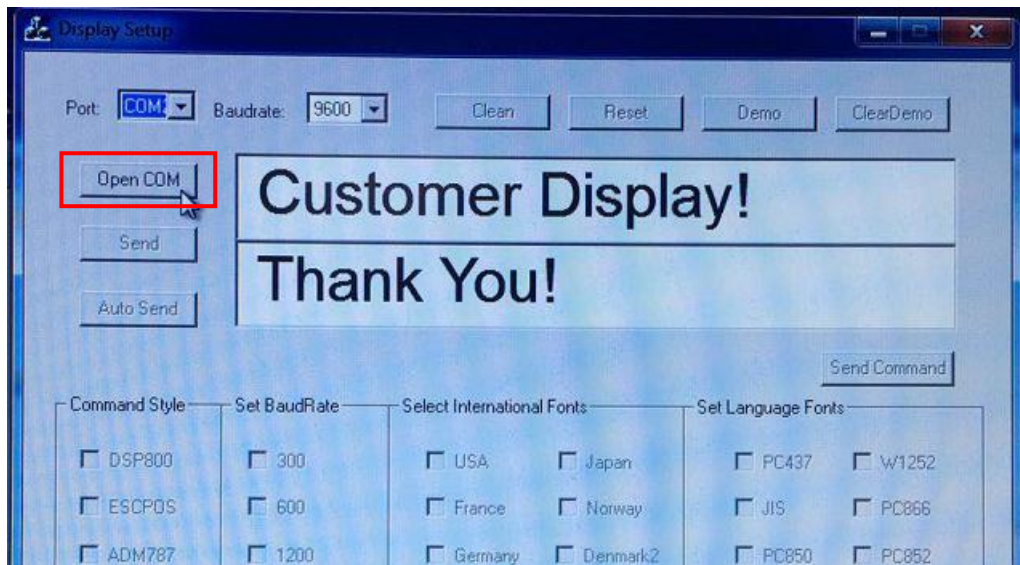
VFD Customer Display Test Method

Notice: Please ensure the port for customer display was not used by other programs before measuring.

1. Open the file  **VFD Guest Display Test Software** to find out the program
 **Display Setup-V2.0**
2. Choose the port for customer display on the pop-up window, COM2 is for built-in port and COM1 is for external port, the Baudrate is set to 9600, as below:



3. Then click “ Open Com” as below:



4. Finally, click”Stop Auto”, it will enter into automatic demonstration interface, as below:

